

The Langley Chair

A refined interpretation of the classic slipper chair, the Langley chair is defined by its clean, low-profile silhouette and gently angled back, creating a poised yet inviting form designed to offer comfort without visual heaviness.

Langley feels both luxurious and understated, allowing the quality of its craftsmanship and proportions to take centre stage. The generously padded seat provides a supportive, comfortable sit, while the compact footprint makes it ideal for bedrooms, dressing areas or as an accent piece within a living space.

Langley is quietly confident and effortlessly versatile — a chair that brings softness, elegance and calm to the home, offering a considered balance of comfort and timeless design.



Dimensions

Width 580mm

Depth 820mm

Height 700mm

Seat Height 400mm

Fabric Options – Velvet



Bone

Fog

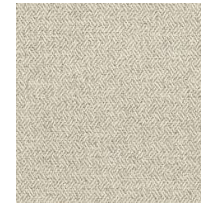
Cinder

Hague Blue

Ink

Umber

Fabric Options – 100% Polyester



Malt (Chenille)

Testing & Ratings

Martindale Rating 1000,000

Fabric complies with BS 5852 ignition source 0&1 FR Domestic

Leg Options



Dark Brown/Brushed Brass



Natural/Brushed Brass



Grey/Brushed Brass

Care & maintenance

Professional upholstery cleaning is recommended.

Foam & heavy Dacron wrapped fixed seat

The Langley Chair

